

Lightsource Test Report (1/2)

Product Infomation

Product Category: SL5

Product Picture:



CIE Colorimetric Parameters

Chromaticity coordinates: $x=0.3132$ $y=0.3359$ $u(u')=0.1956$ $v=0.3147$ $v'=0.4720$

CCT: **Tc=6430K** (duv=0.00642)

Color Ratio: R=0.113 G=0.859 B=0.028

Peak Wavelength: 441.8nm

Half Bandwidth: 18.8nm

Dominant Wavelength: 493.4nm

Color Purity: 0.066

CRI: Ra= 64.7, avgR(1~14)= 56.3, avgR(1~15)= 56.3

TM30: Rf= 65, Rg= 94

R1 =63

R2 =67

R3 =69

R4 =67

R5 =66

R6 =58

R7 =73

R8 =55

R9 =0

R10=21

R11=67

R12=37

R13=62

R14=82

R15=57

Color Quality Scale: Qa= 67.6, Qf= 65.8, Qp= 72.8, Qg= 88.4

Q1 =77

Q2 =89

Q3 =61

Q4 =58

Q5 =68

Q6 =69

Q7 =73

Q8 =85

Q9 =86

Q10=66

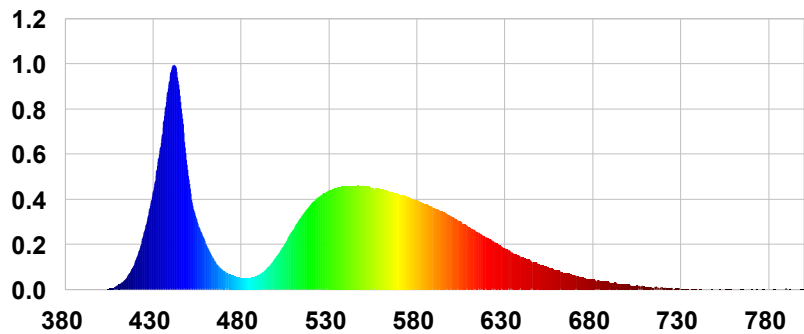
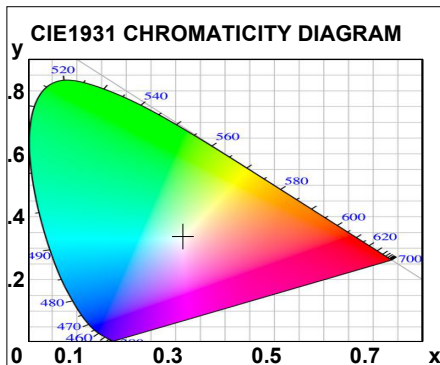
Q11=62

Q12=64

Q13=68

Q14=52

Q15=63



Photometric Parameters

Luminous Flux: 1335.36 lm

Efficiency: 124.79 lm/W

Radiant Power: 4.035 W

EEL: 0.11

Energy Efficiency Class: A++ (EU 874-2012)

Pupil Flux: 2202.33 Plm

Pupil Lumens Per Watt: 205.81 Plm/W

Pupil Factor (Kp): 1.649

Cirtpopic Flux: 4459.77 lm

Mesopic Flux (CIE R.): 1710.00 lm (Lp= 0.100 cd/m2, S/P= 1.90)

Mesopic Flux (USP): 1992.81 lm (Lp= 0.100 cd/m2, S/P= 1.90)

Mesopic Flux (MOVE): 1773.37 lm (Lp= 0.100 cd/m2, S/P= 1.90)

Electric Parameters

Voltage: 14.000V

Current: 0.7644A

Power: 10.70W

Power Factor: 1.0000

Frequency: 0.00Hz

Test Infomation

Scan Range: 380~800:1nm

Stabilization Time: 0 Min

Max of Signal: 45425 (2615)

Photometric Method: sphere-spectroradiometer

Photometric Condition: Sphere diameter: 1.50m, 4°

CCD Integration Time: 318.86 ms

Condition: Tx:26.9°C, Ti:0.0°C, R.H.:60%

Test Lab: 2

Operator: Sheng

Test Device: Inventfine CMS-2S (Plus)

Test Time: 2024-10-14 16:06:08

Inspector: Li

Lightsource Test Report (2/2)

Product Information

Product Category: SL5

WL(nm)	PL	PE(mW/nm)	WL(nm)	PL	PE(mW/nm)	WL(nm)	PL	PE(mW/nm)
380	0.0023	0.1160	525	0.4181	21.3674	670	0.0665	3.3995
385	0.0021	0.1099	530	0.4429	22.6366	675	0.0559	2.8567
390	0.0010	0.0534	535	0.4552	23.2682	680	0.0474	2.4207
395	0.0009	0.0448	540	0.4615	23.5876	685	0.0394	2.0113
400	0.0016	0.0827	545	0.4606	23.5438	690	0.0322	1.6447
405	0.0073	0.3718	550	0.4572	23.3699	695	0.0271	1.3872
410	0.0233	1.1923	555	0.4539	23.2004	700	0.0246	1.2569
415	0.0577	2.9489	560	0.4462	22.8047	705	0.0200	1.0240
420	0.1324	6.7675	565	0.4352	22.2453	710	0.0160	0.8153
425	0.2615	13.3672	570	0.4249	21.7151	715	0.0126	0.6464
430	0.4405	22.5147	575	0.4132	21.1184	720	0.0106	0.5420
435	0.6905	35.2930	580	0.4005	20.4678	725	0.0118	0.6011
440	0.9656	49.3555	585	0.3817	19.5085	730	0.0048	0.2442
445	0.8924	45.6111	590	0.3650	18.6570	735	0.0023	0.1187
450	0.5081	25.9708	595	0.3464	17.7060	740	0.0018	0.0895
455	0.3063	15.6551	600	0.3244	16.5817	745	0.0024	0.1203
460	0.2093	10.6982	605	0.3044	15.5606	750	0.0020	0.1023
465	0.1314	6.7149	610	0.2798	14.2992	755	0.0053	0.2693
470	0.0876	4.4782	615	0.2554	13.0538	760	0.0017	0.0866
475	0.0667	3.4106	620	0.2322	11.8691	765	0.0032	0.1640
480	0.0525	2.6851	625	0.2091	10.6854	770	0.0054	0.2777
485	0.0528	2.6993	630	0.1858	9.4967	775	0.0007	0.0367
490	0.0663	3.3882	635	0.1634	8.3495	780	0.0002	0.0093
495	0.1012	5.1703	640	0.1449	7.4086	785	0.0002	0.0124
500	0.1477	7.5477	645	0.1293	6.6067	790	0.0103	0.5270
505	0.2094	10.7035	650	0.1142	5.8349	795	0.0002	0.0098
510	0.2749	14.0498	655	0.0999	5.1039	800	0.0014	0.0721
515	0.3332	17.0322	660	0.0876	4.4771			
520	0.3839	19.6208	665	0.0750	3.8337			

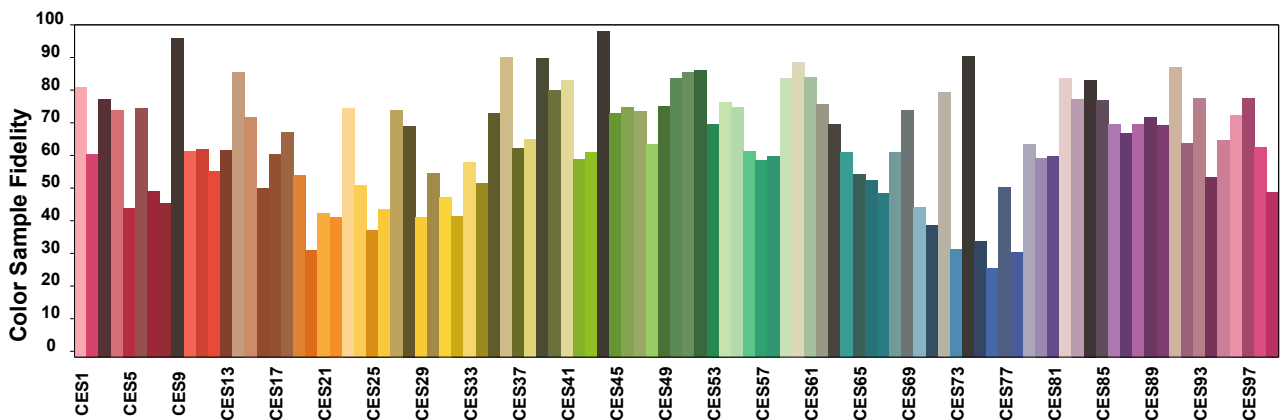
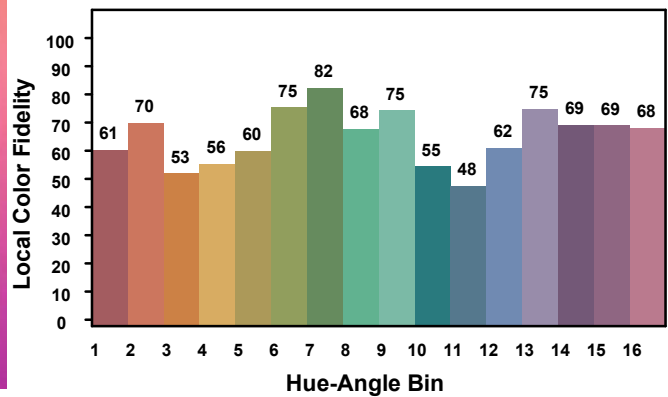
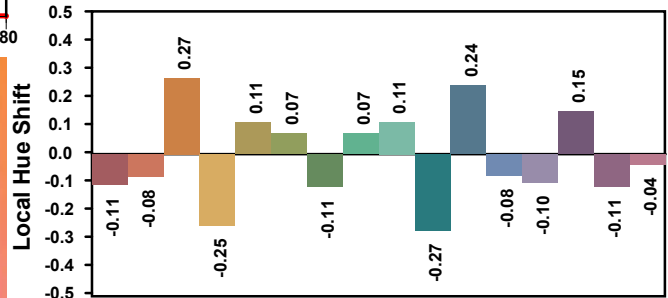
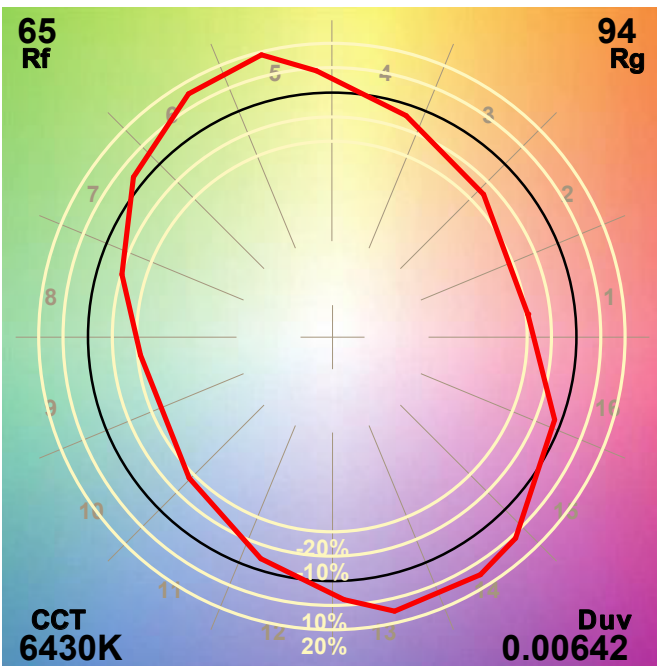
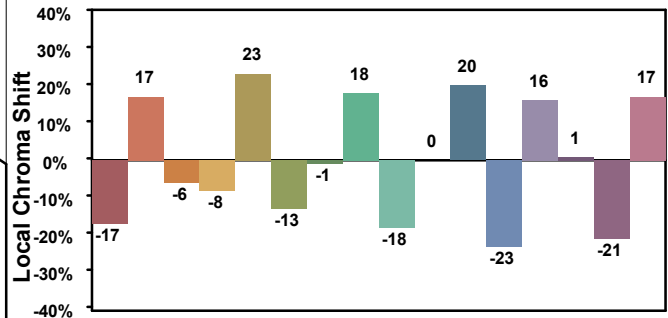
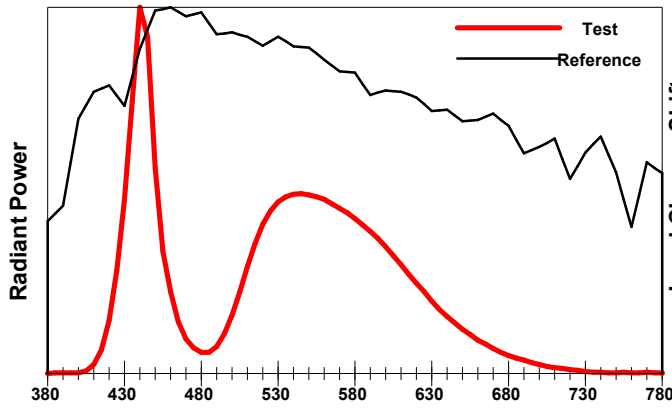
Condition: Tx:26.9°C, Ti:0.0°C, R.H.:60%
Test Lab: 2
Operator: Sheng

Test Device: Inventfine CMS-2S (Plus)
Test Time: 2024-10-14 16:06:08
Inspector: Li

IES TM-30-18 Color Rendition Report

Product Information

Product Category: SL5



Condition: Tx:26.9°C, Ti:0.0°C, R.H.:60%
 Test Lab: 2
 Operator: Sheng

Test Device: Inventive CMS-2S (Plus)
 Test Time: 2024-10-14 16:06:08
 Inspector: Li