

Lightsource Test Report (1/2)

Product Information

Product Category: SL5 (Dim function)

Product Picture:



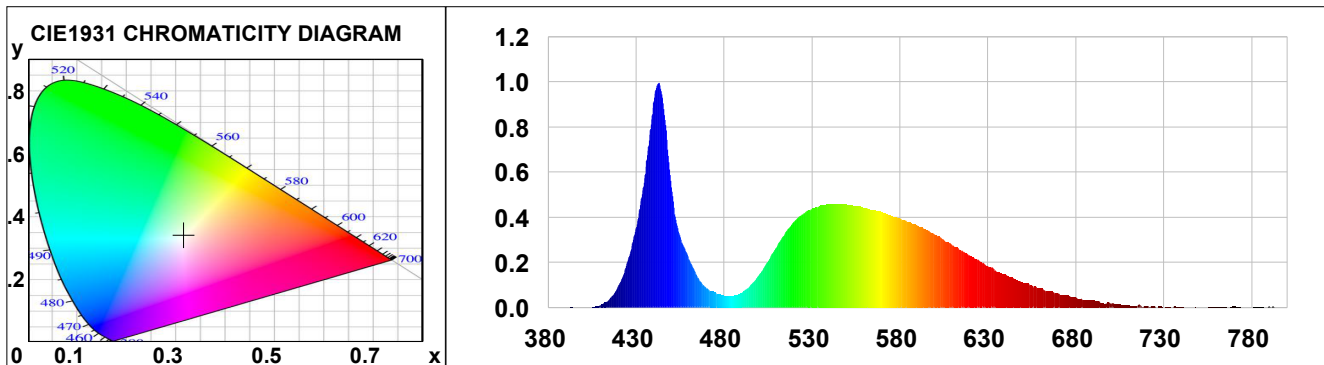
CIE Colorimetric Parameters

Chromaticity coordinates: $x=0.3153$ $y=0.3406$ $u(u')=0.1953$ $v=0.3165$ $v'=0.4748$
 CCT: **Tc=6300K** (duv=0.00778) Color Ratio: R=0.113 G=0.859 B=0.028
 Peak Wavelength: 442.8nm Half Bandwidth: 17.4nm
 Dominant Wavelength: 496.9nm Color Purity: 0.057
 CRI: Ra= 65.0, avgR(1~14)= 56.5, avgR(1~15)= 56.5 TM30: Rf= 66, Rg= 93

R1 =63	R2 =67	R3 =71	R4 =67	R5 =65	R6 =59	R7 =74	R8 =54
R9 =0	R10=23	R11=66	R12=37	R13=62	R14=83	R15=56	

Color Quality Scale: Qa= 67.9, Qf= 66.4, Qp= 72.4, Qg= 88.0

Q1 =77	Q2 =90	Q3 =61	Q4 =58	Q5 =68	Q6 =69	Q7 =72	Q8 =85
Q9 =87	Q10=67	Q11=63	Q12=66	Q13=68	Q14=52	Q15=62	



Photometric Parameters

Luminous Flux: 710.85 lm	Efficiency: 141.10 lm/W	Radiant Power: 2.114 W
EEL: 0.09	Energy Efficiency Class: A++ (EU 874-2012)	
Pupil Flux: 1169.68 Plm	Pupil Lumens Per Watt: 232.17 Plm/W	Pupil Factor (Kp): 1.645
Cirtpopic Flux: 2367.69 lm		
Mesopic Flux (CIE R.): 909.15 lm (Lp= 0.100 cd/m ² , S/P= 1.89)		
Mesopic Flux (USP): 1059.02 lm (Lp= 0.100 cd/m ² , S/P= 1.89)		
Mesopic Flux (MOVE): 942.70 lm (Lp= 0.100 cd/m ² , S/P= 1.89)		

Electric Parameters

Voltage: 13.999V	Current: 0.3599A	Power: 5.04W
Power Factor: 1.0000	Frequency: 0.00Hz	

Test Information

Scan Range: 380~800:1nm	Photometric Method: sphere-spectroradiometer
Stabilization Time: 0 Min	Photometric Condition: Sphere diameter: 1.50m, 4°
Max of Signal: 45734 (2822)	CCD Integration Time: 604.71 ms

Lightsource Test Report (2/2)

Product Information

Product Category: SG616

WL(nm)	PL	PE(mW/nm)	WL(nm)	PL	PE(mW/nm)	WL(nm)	PL	PE(mW/nm)
380	0.0010	0.0283	525	0.4183	11.3913	670	0.0667	1.8155
385	0.0027	0.0748	530	0.4423	12.0444	675	0.0568	1.5474
390	0.0024	0.0650	535	0.4546	12.3788	680	0.0490	1.3341
395	0.0018	0.0490	540	0.4597	12.5174	685	0.0364	0.9919
400	0.0022	0.0600	545	0.4608	12.5495	690	0.0325	0.8842
405	0.0044	0.1205	550	0.4579	12.4697	695	0.0221	0.6013
410	0.0144	0.3910	555	0.4509	12.2794	700	0.0176	0.4804
415	0.0435	1.1838	560	0.4433	12.0726	705	0.0160	0.4353
420	0.1009	2.7477	565	0.4348	11.8416	710	0.0128	0.3473
425	0.2050	5.5817	570	0.4229	11.5161	715	0.0107	0.2906
430	0.3600	9.8046	575	0.4097	11.1565	720	0.0094	0.2568
435	0.5931	16.1503	580	0.3983	10.8470	725	0.0090	0.2456
440	0.9148	24.9116	585	0.3823	10.4095	730	0.0014	0.0379
445	0.9346	25.4512	590	0.3646	9.9296	735	0.0011	0.0309
450	0.5384	14.6622	595	0.3470	9.4488	740	0.0042	0.1146
455	0.3170	8.6319	600	0.3248	8.8452	745	0.0026	0.0716
460	0.2207	6.0087	605	0.3018	8.2176	750	0.0034	0.0932
465	0.1381	3.7610	610	0.2782	7.5764	755	0.0054	0.1460
470	0.0898	2.4447	615	0.2559	6.9673	760	0.0033	0.0912
475	0.0700	1.9067	620	0.2325	6.3302	765	0.0051	0.1392
480	0.0541	1.4735	625	0.2111	5.7489	770	0.0059	0.1608
485	0.0537	1.4625	630	0.1868	5.0861	775	0.0001	0.0020
490	0.0666	1.8140	635	0.1634	4.4506	780	0.0000	0.0001
495	0.1007	2.7420	640	0.1480	4.0300	785	0.0050	0.1360
500	0.1479	4.0275	645	0.1291	3.5143	790	0.0107	0.2902
505	0.2096	5.7069	650	0.1146	3.1199	795	0.0045	0.1239
510	0.2731	7.4364	655	0.0996	2.7115	800	0.0023	0.0625
515	0.3366	9.1654	660	0.0855	2.3276			
520	0.3846	10.4745	665	0.0753	2.0514			

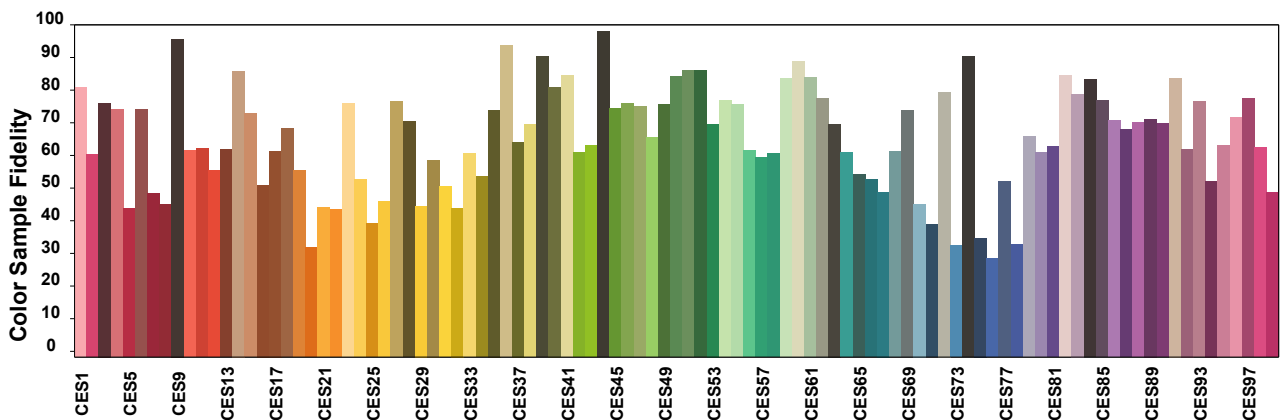
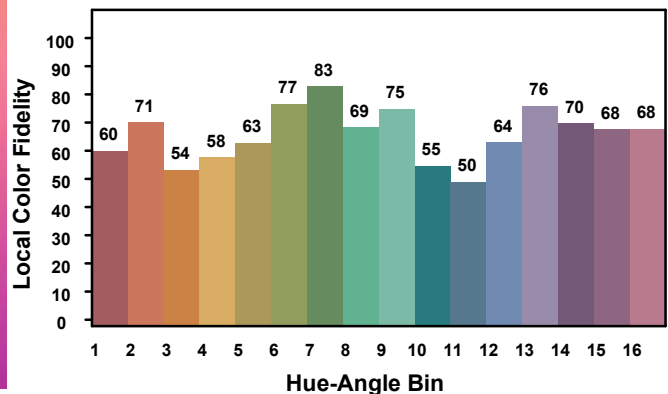
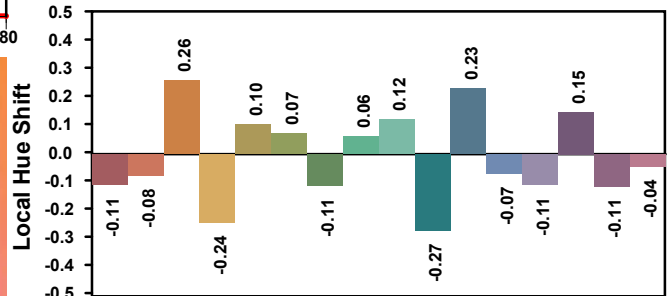
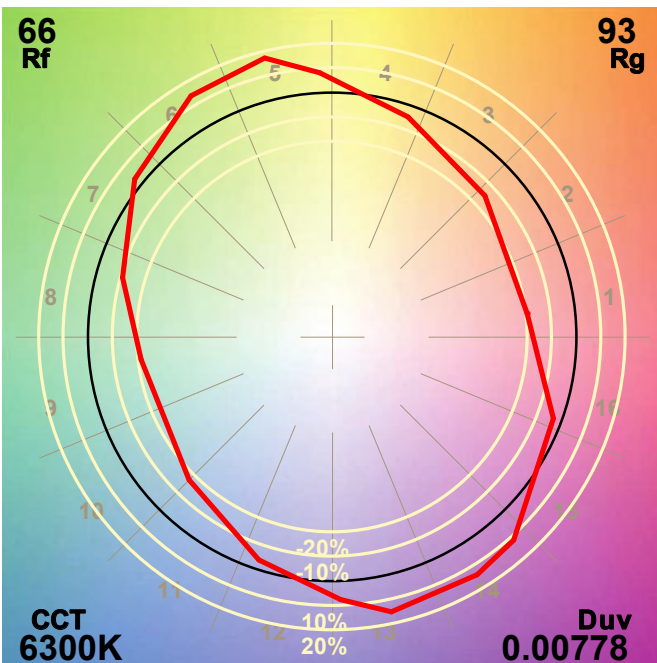
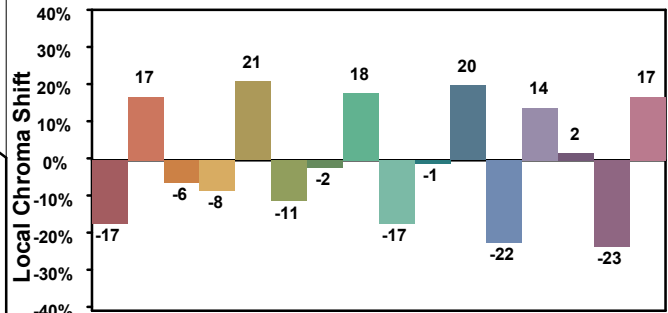
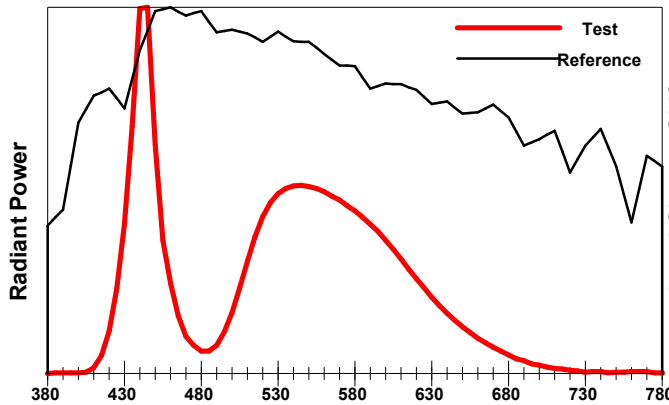
Condition: Tx:26.9°C, Ti:0.0°C, R.H.:60%
Test Lab: 2
Operator: Sheng

Test Device: Inventfine CMS-2S (Plus)
Test Time: 2024-10-14 16:06:36
Inspector:

IES TM-30-18 Color Rendition Report

Product Information

Product Category: SG616



Condition: Tx:26.9°C, Ti:0.0°C, R.H.:60%
 Test Lab: 2
 Operator: Sheng

Test Device: Inventive CMS-2S (Plus)
 Test Time: 2024-10-14 16:06:36
 Inspector: